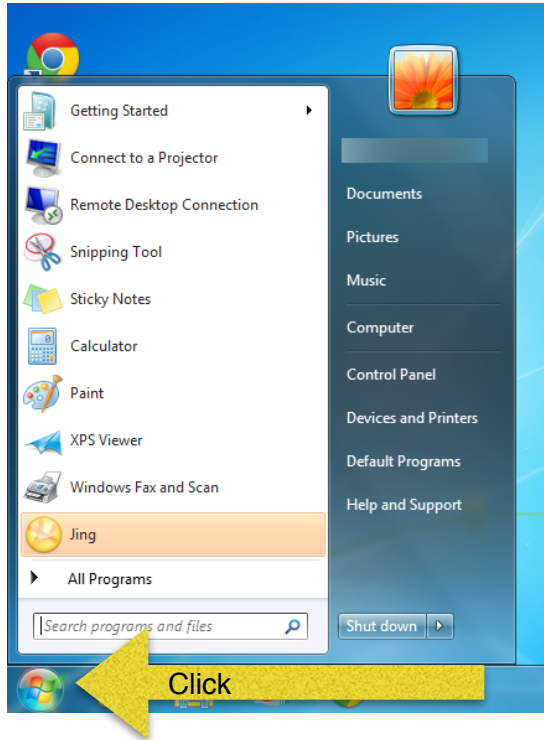
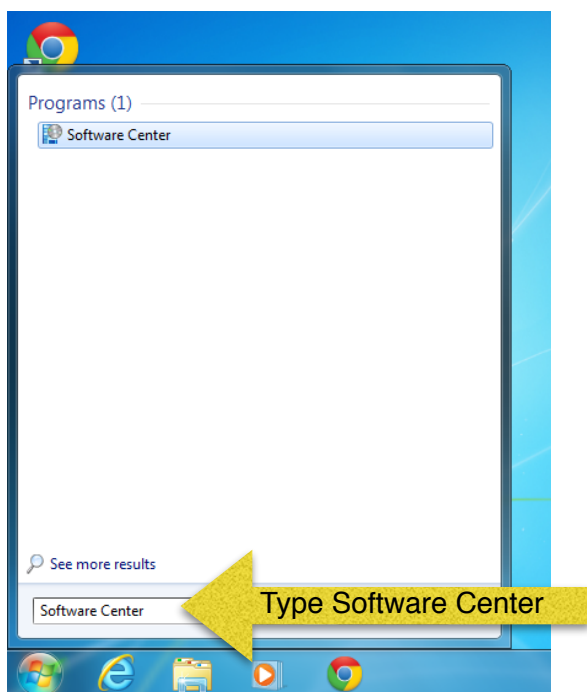


Installing ArtRage Demo

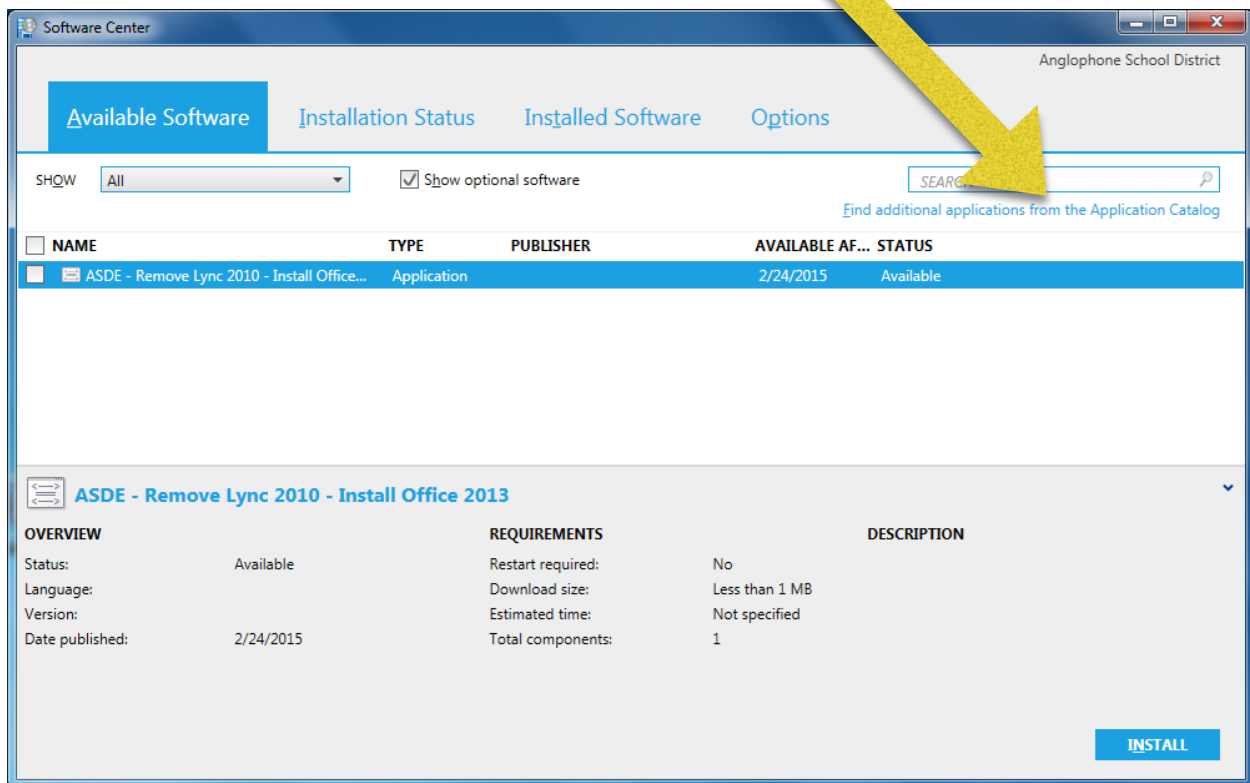
- Click on **START** button



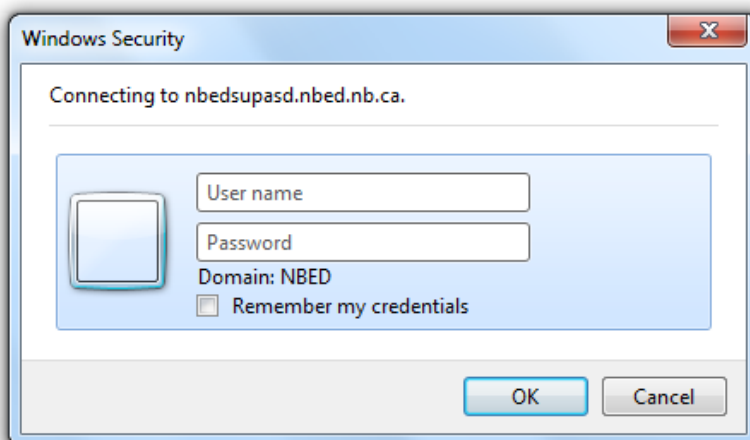
- Type **Software Center** in search window and press **ENTER**



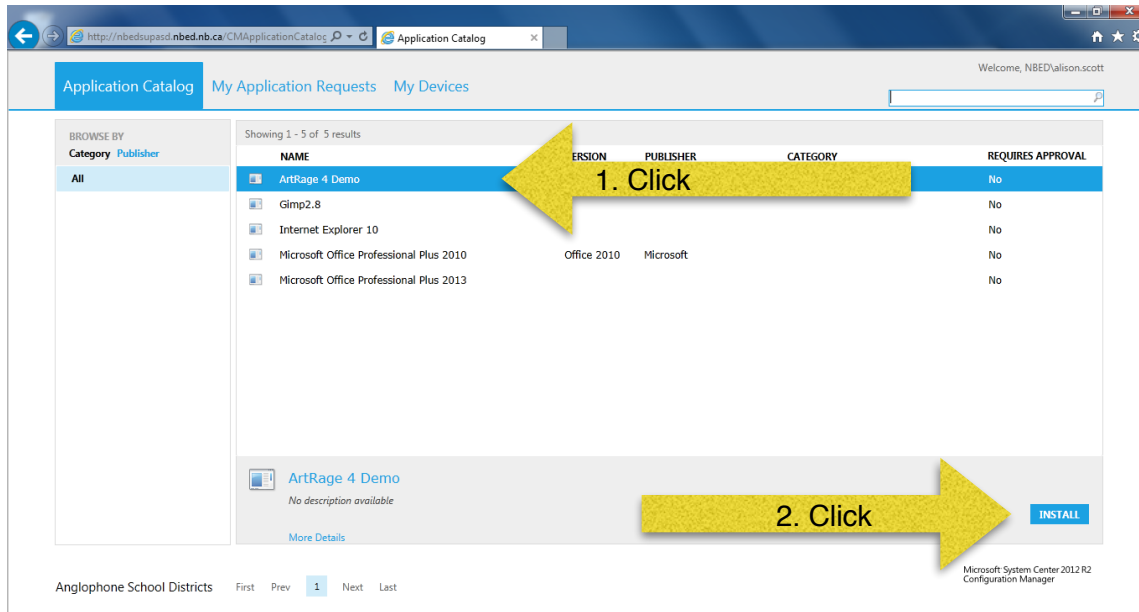
- When Software Centre opens, click on **Find additional applications from the Application Catalog**



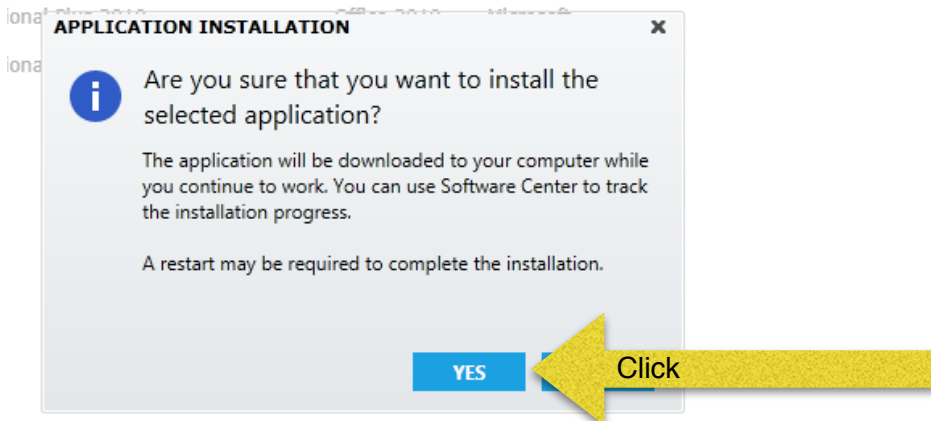
- Type in your NBED credentials when prompted making sure to proceed your username with NBED\



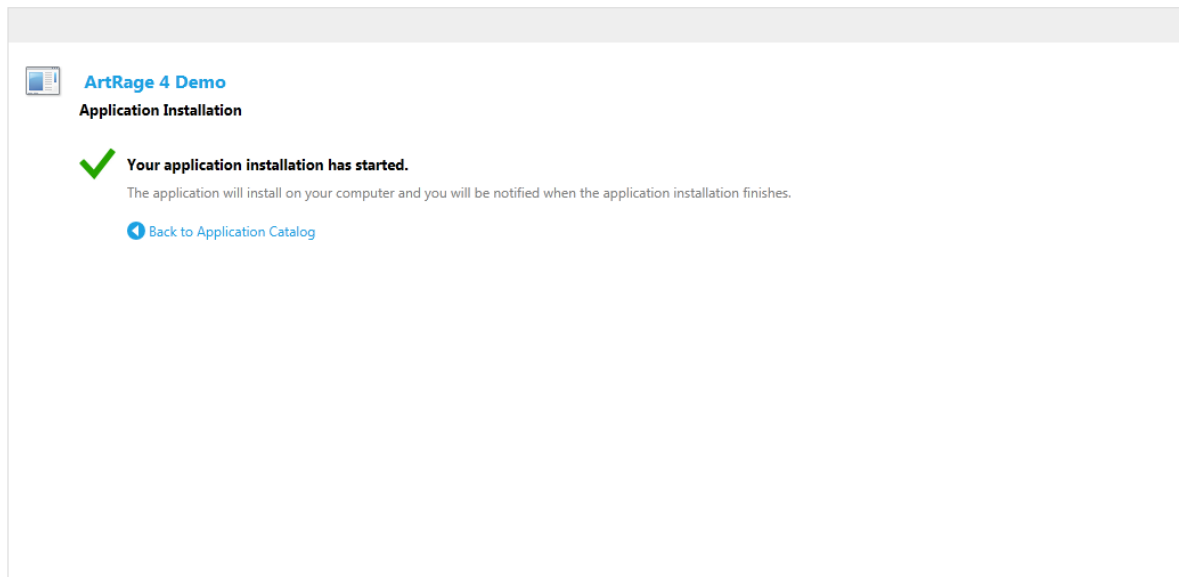
- When the Application Catalog screen opens up, click on **ArtRage** and click **INSTALL**



- Click **YES** when asked for confirmation of application to install



- The application will start installing and show the screen below



Microsoft System Center 2012 R2
Configuration Manager

- The following screen will appear once ArtRage Demo is installed, click **OK**

